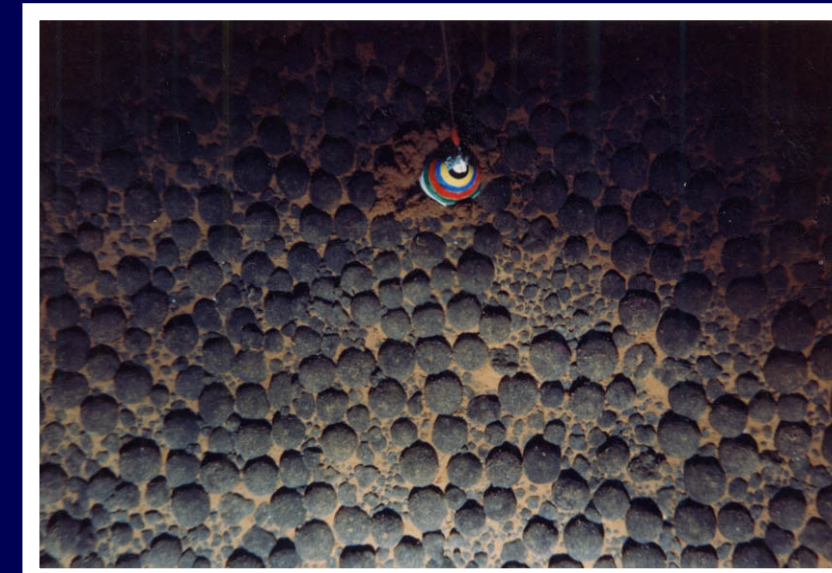
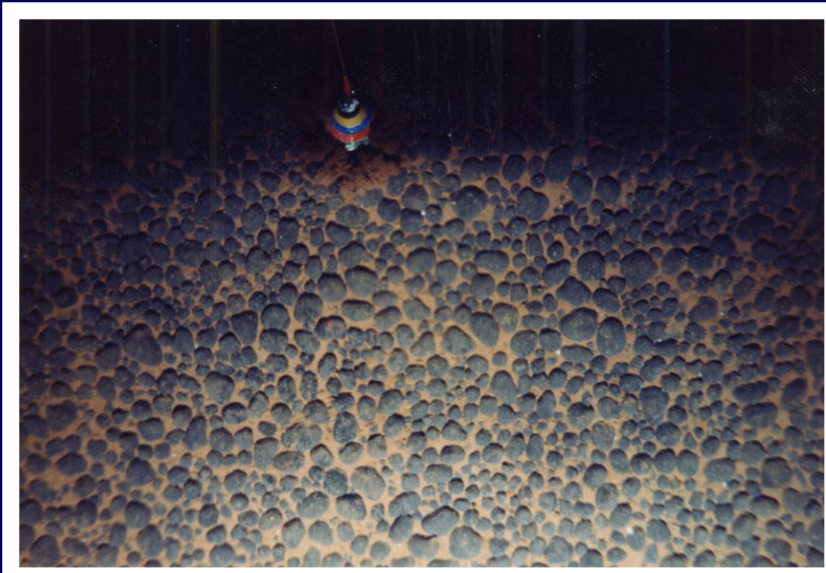


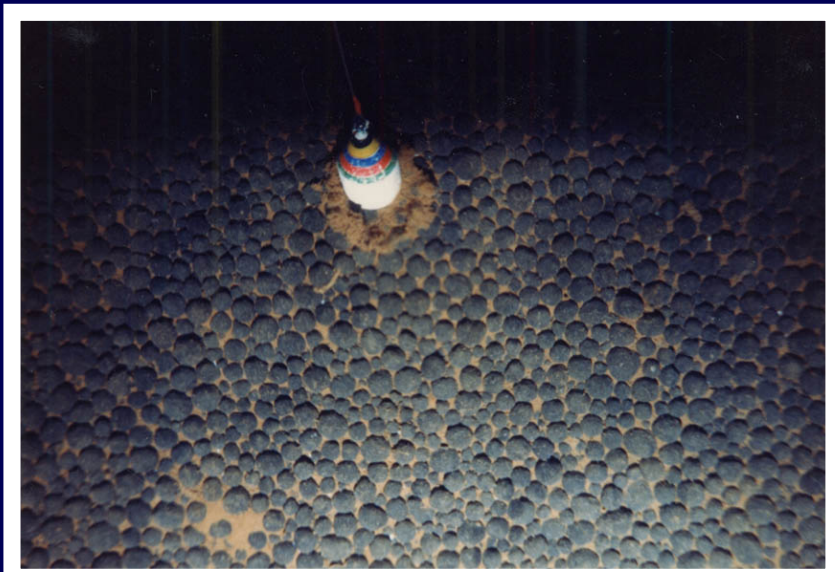
note: the camera trigger weight in all photos is 10 cm across



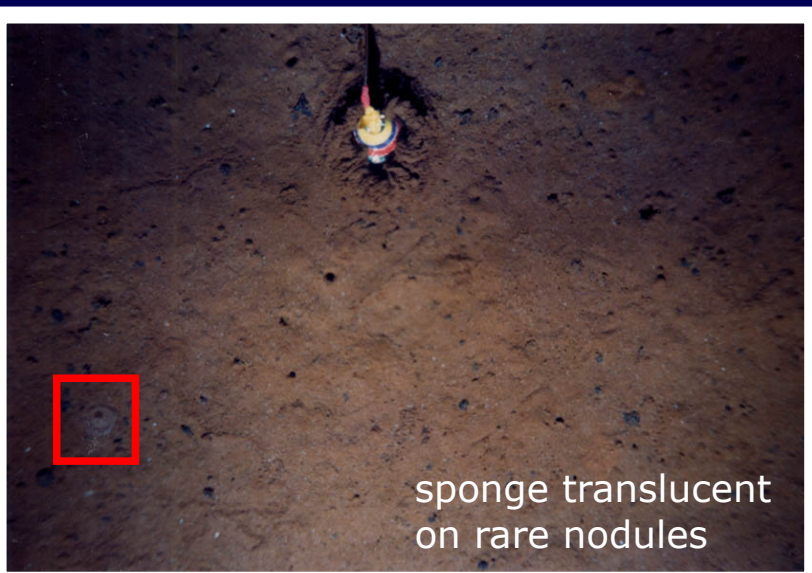
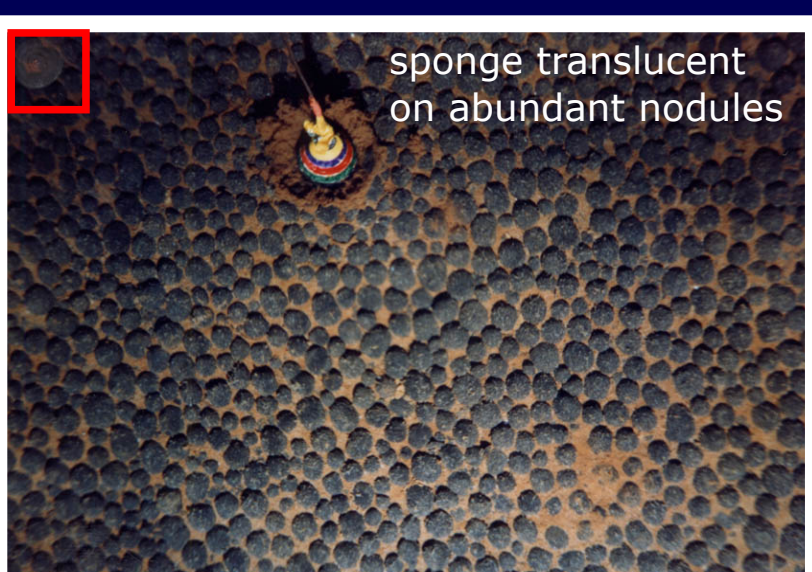
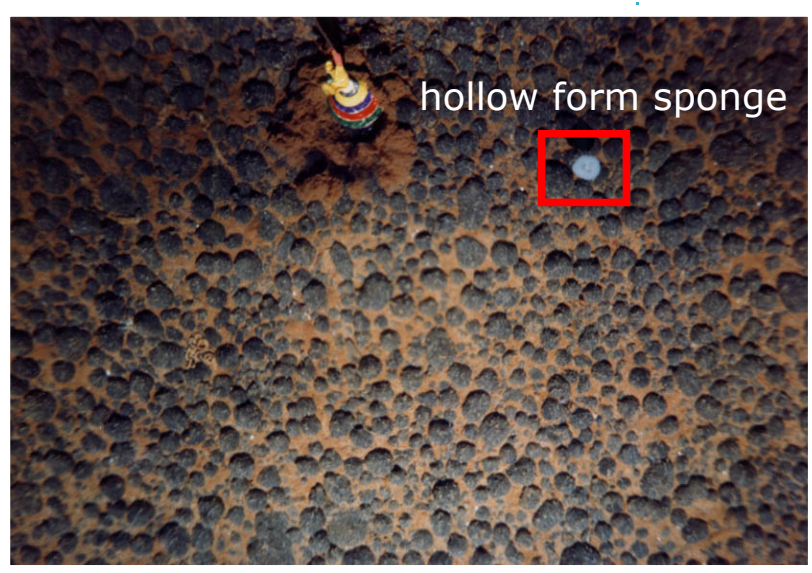
Spheroidal nodules

in the south Penhryn Basin regular nodules are of spheroidal form with only slight variation in size these are the most common and most important part of the mineral resource

The photos shown here were collected in 1986 from two locations as shown.
Japanese researchers used a camera, suspended on a cable and lowered to the seabed.
The camera was lifted slightly and dropped several times at stations, each station was several kilometers apart.
As the camera approached the seabed a trigger weight fired a flash and had the camera take a picture.
While an improvement on photos taken the year before, these were collected on old-style film, modern systems can take more and better quality images.



Organisms found with nodules



Other nodules and crusts

