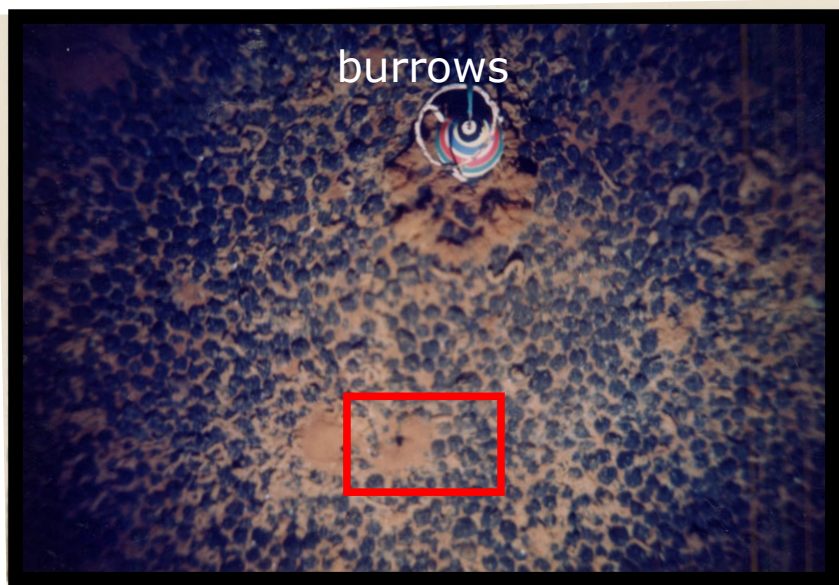
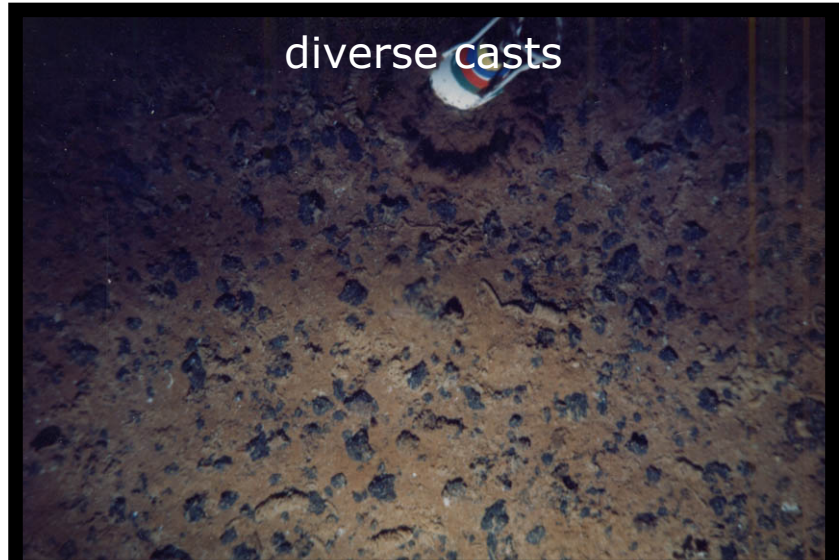
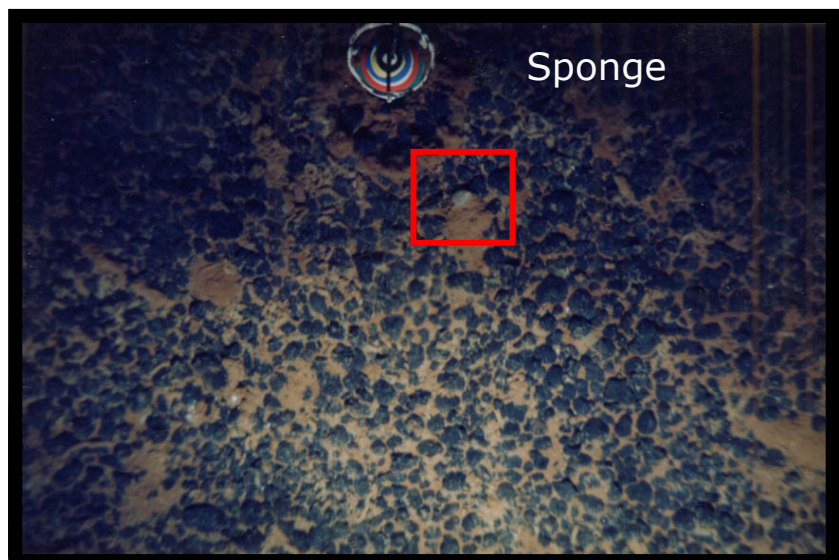
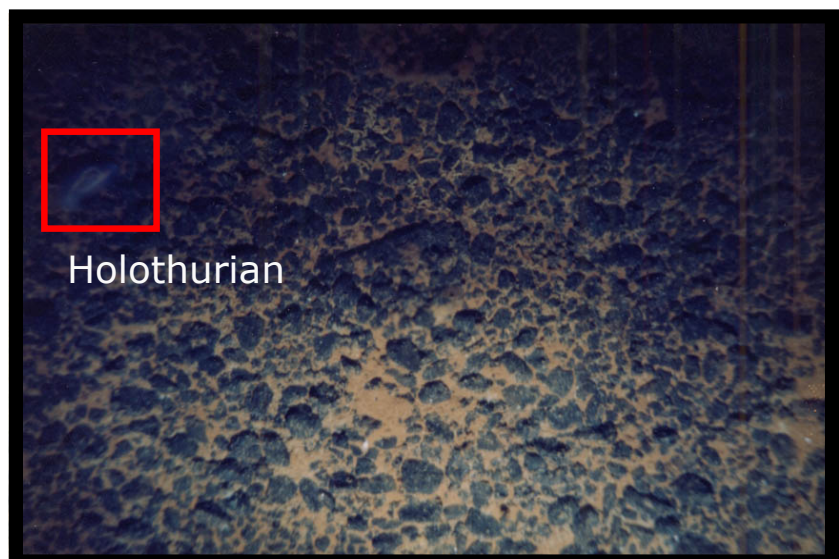
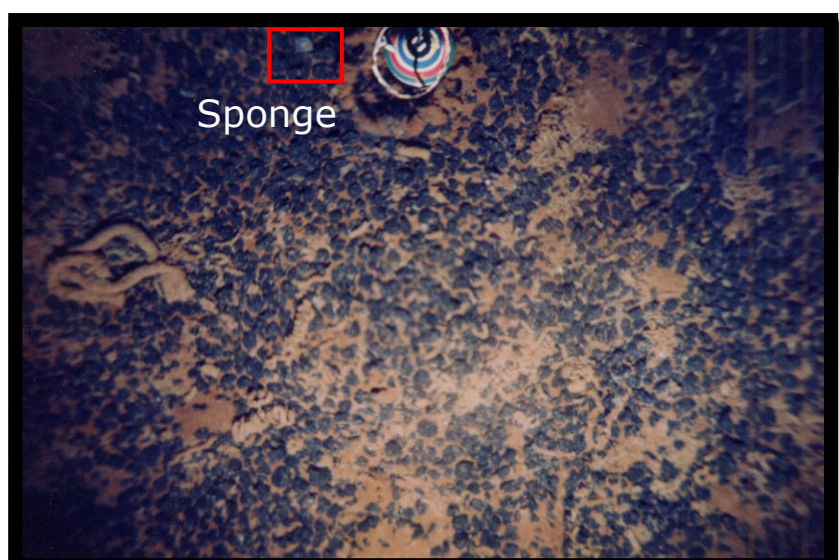


**Forms of ferromanganese nodules and crusts in the North Penhryn Basin**  
Inano Harmon, Rima Browne, John Parianos

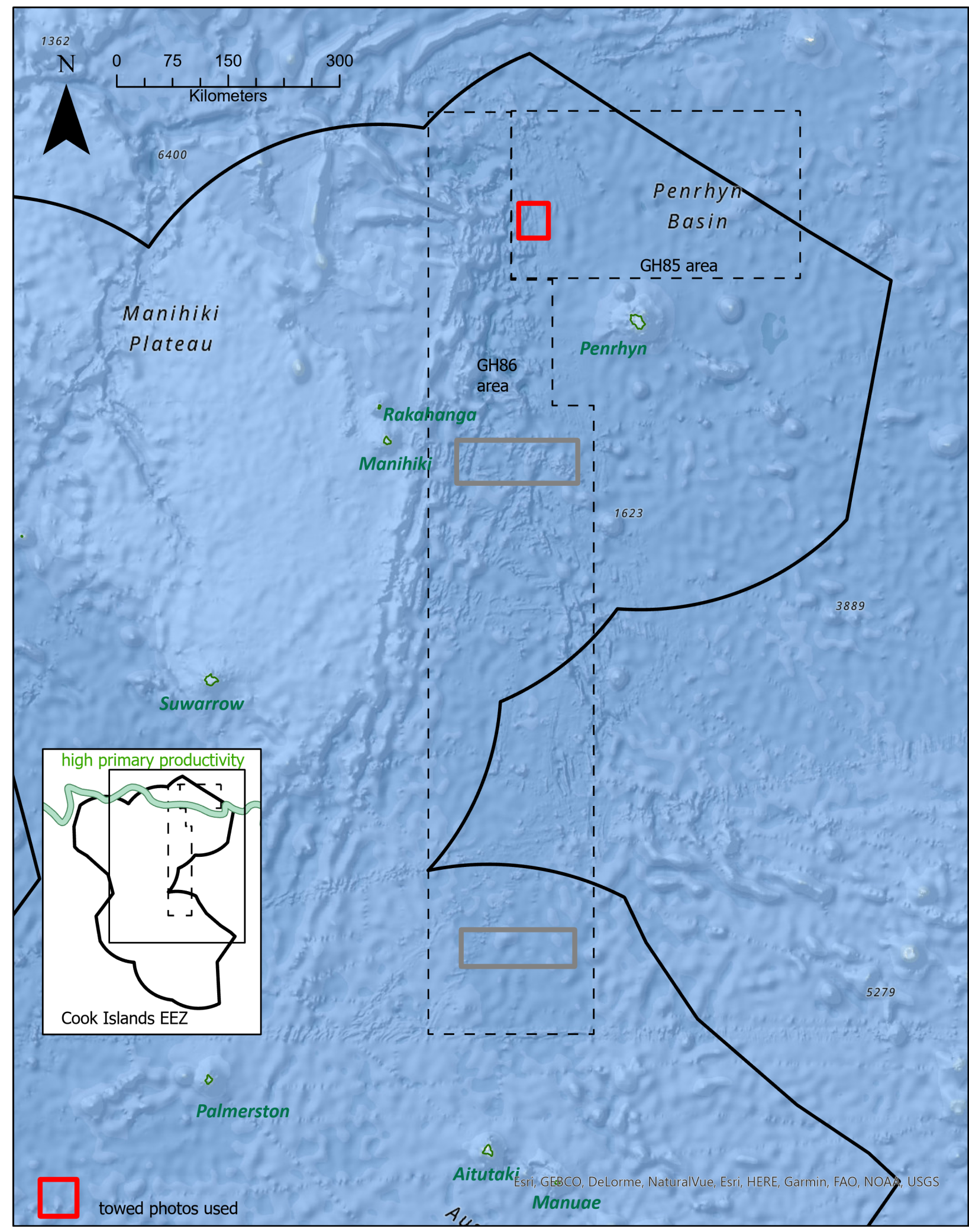
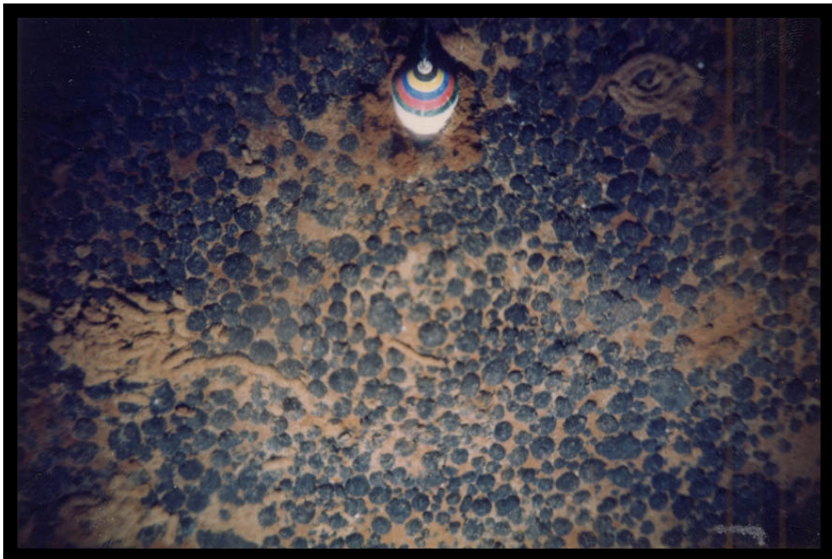
Organisms found with nodules



Elipsoidal Nodules

In the north Penhryn Basin elipsoidal and irregular nodules are more common and likely comprise most of the mineral resource. Compared to the south Penhryn Basin, there is evidence of higher bio-activity through numerous casts and this reflects its more northerly position in equatorial high surface primary productivity zone.

The photos shown here were collected in 1985. Japanese researchers used a camera, suspended on a cable and lowered to the seabed. The camera was lifted slightly and dropped several times at stations, each station was several kilometers apart. As the camera approached the seabed a trigger weight fired a flash and had the camera take a picture. These were collected on old-style film, modern systems can take more and better quality images.



note: the camera trigger weight in all photos is 10 cm across

Other nodules and crusts

